



# Gas Fireplace Inserts



MENDOTA

NORTH AMERICA'S LUXURY FIREPLACE

THE MENDOTA FIREPLACE EXPERIENCE



# Table of contents:

Why Mendota

FullView Décor

FullView

D Series

Mendota Flame

Selection Guide

Decorative Options

Sizing Diagram & Specifications

Additional Information

Design it online

To design your perfect fireplace insert or view videos of the fire in action visit [www.mendotahearth.com](http://www.mendotahearth.com)

NOTE: Not all fireplace inserts are shown with barrier screens. Flames may vary in appearance based on location and fuel type.



Model FV44i Décor with Aged Leather Wide Grace front, Norway Spruce fire base and Panoramic Metallic Silver Porcelain Reflective interior lining





# Luxury where you live

There's much to love about a Mendota luxury gas fireplace insert. It begins the first time you turn it on and are instantly rewarded with the incredible, authentic fire, the memory of messy ashes and hours spent stacking and storing wood vanquished with the touch of a button. Then there's the quiet confidence of knowing every Mendota fire burns with a century-old tradition of craftsmanship and gas technology, where details such as true full seam welding, heavy-gauge steel and careful hand assembly deliver on the promise of a lifetime of comfort. But it's the moment you linger in the doorway that the feeling of luxury truly hits home. The realization that your Mendota fireplace indulges you with ease, warmth and great satisfaction each and every day. That's not just luxury—it's luxury where you live.





Model FV44i Décor with Antique Copper Wide Grace front, Forest Oak fire base and Panoramic Black Porcelain Reflective interior lining

Endless possibilities  
start here

Mendota FullView Décor gas fireplace inserts let you create a room with the colors, textures and shapes you love, using elements like glass fire stones, natural river rock or panoramic panels that expand and amplify the nuances of the fire. Their stunning aesthetics are matched only by their efficient performance—replacing drafty, messy and inconvenient woodburning fires with today's high-efficiency green technology. The possibilities are virtually endless, but the end result is distinctively you.





Model FV44i Décor with Brushed Chrome Willowbrook Arch front, Norway Spruce fire base and Concrete Flat Panel interior lining



Model FV44i Décor with Antique Copper Willowbrook front, Natural River Rock fire base and Panoramic Copper Porcelain Reflective interior lining



Model FV44i Décor with Antique Copper and Swedish Nickel Grace Arch layered fronts, Forest Oak fire base and Panoramic Copper Porcelain Reflective interior lining



Model FV44i Décor with Black Willow doors, Liquid Clear Glass fire base and Panoramic Black Porcelain Reflective interior lining

## Frame it in style

Whatever mood you wish to create, Mendota offers you a choice of fronts and doors.

Frame your FullView Décor fire in a wide range of colors and finishes—from rugged

Vintage Iron to contemporary Swedish Nickel.



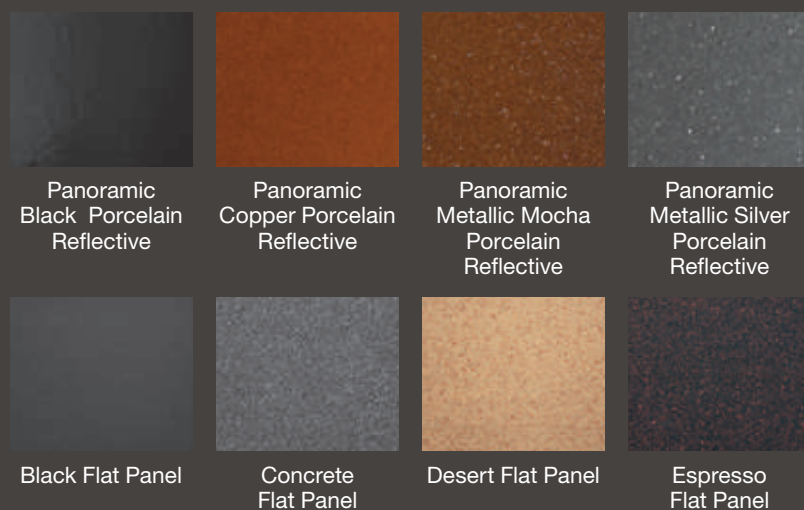
# An elegant gas fireplace insert that's smarter, too

Designed for those who are looking to make a statement with their hearth, Mendota Décor lets you transform your traditional fireplace into an elegant, sophisticated art form. It creates a refined atmosphere in any room, featuring century-old Mendota craftsmanship and exclusive Mendota BurnGreen™ convenience and efficiency.

Featured fire base choices:



Interior lining options:



Model FV44i Décor with Swedish Nickel Traditions front, Forest Oak fire base, Panoramic Black Porcelain Reflective interior lining and custom surround





Model FV33i with Antique Copper Grace layered fronts, Antique Copper accent corners, Swedish Nickel dome rivets, Premium Fiber Oak Log fire base and Red Soldier Course Brick interior lining

# Rediscover relaxation

Do you have a woodburning fireplace that never gets used because it's inefficient and difficult to tend?

Reclaim the warmth and relaxation that gentle flames bring to a room with a Mendota gas fireplace insert. Bring your old fireplace back to life. Gather around a Mendota fireplace insert and rediscover the charm and comfort you've been missing.





Model FV33i with Black Prairie doors, Birch fire base and Black Porcelain Reflective interior lining

# Our FullView fire belongs in your room

Mendota's FullView design accentuates the fire and minimizes the insert integration. Your guests will never know your fireplace isn't original to your house. Unless you can't resist bragging about how easily your Mendota dealer installed it.



Model FV44i with Vintage Iron Homestead doors, Norway Spruce fire base and Black Porcelain Reflective interior lining



# Mendota's high-efficiency BurnGreen™ system

Mendota FV33i and FV44i FullView fireplace inserts with the BurnGreen™ burner/remote control system are ANSI/AGA certified high-efficiency gas wall furnaces and give you complete control. With the touch of a button, you can turn the burners and the pilot on and off, adjust the heat and blower output, and even turn off the rear burner on mild days. You can also automatically control room temperature using the remote control's digital thermostat. BurnGreen™ means burning smarter, giving you choices to conserve fuel and help the environment.

Interior lining options:



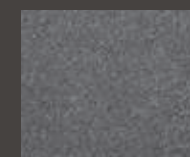
Black Porcelain Reflective



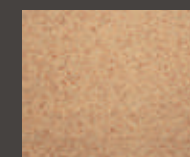
Red Soldier Course Brick



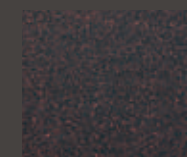
Black Flat Panel



Concrete Flat Panel



Desert Flat Panel



Espresso Flat Panel

Model FV44i with Hammered Leather Wide Grace front, Premium Fiber Oak Log fire base and Red Soldier Course Brick interior lining





Model D30 with Black Prairie doors, optional Vintage Iron lattice overlay and custom surround

# Like an old friend

There's nothing quite like coming home and warming up by a roaring fire. Like a long-standing friend, the Mendota D Series gas fireplace insert greets you with familiar warmth and styling. It's available in two sizes

to fit most existing fireplace openings. Both models feature sealed combustion and direct vent technology that keeps warm air in and cold air out. With Mendota's Lifetime Limited Warranty, you can count on your D Series fireplace insert to always be there—providing trustworthy and reliable warmth. When you experience a friendship this good, it's good to know it will last a lifetime.





Model D40 with Antique Copper Bentley doors



Model D40 with Vintage Iron Deerfield front



Model D30 with Black Andover doors and optional Gun Metal lattice overlay





# Focus on the fire

Mendota's beautiful log fire is the result of years of research and development. It begins with a careful selection of actual field logs, hand-molded to capture every intricate detail. Each log is hand-painted

using a palette of eight colors and arranged to create the exact look and feel of a wood log fire in its most beautiful burning stages. Go from a roaring fire with lots of heat to the lazy flames of a late night campfire, all with the touch of a button. In the end, there's just you and the beautiful fire—the way the experience was always meant to be.










# Decorative options

Distinctive details in a range of finishes let you create a look that's yours, and yours alone.

ACCENT CORNERS				
	Grace Narrow Front	Grace Wide Front	Grace Narrow Arch	Grace Wide Arch
FullView 33i Décor				
FullView 44i Décor				
FullView 33i				
FullView 44i				

ACCENT CORNERS		
	Traditions Front	DOME RIVETS
FullView 33i Décor		
FullView 44i Décor		
FullView 33i		
FullView 44i		

Dome Rivets can also be used with the Accent Corners.

ACCENT BARS				
	Grace Narrow Front	Grace Wide Front	Grace Narrow Arch	Grace Wide Arch
FullView 33i Décor				
FullView 44i Décor				
FullView 33i				
FullView 44i				

\*Antique Copper, Brushed Chrome and Swedish Nickel Accent Bars are special order.

## COLOR KEY:

	Black		Brushed Chrome		Oil Rubbed Bronze
	Antique Copper		Hammered Leather		Swedish Nickel
			Vintage Iron		

Consult your Mendota dealer for availability of fronts, doors and options by model. Products, specifications and prices are subject to change without notice.

# Metal finish options

Find just the right front or door finish that complements your taste, from sophisticated to rugged.

Black	Aged Leather	Antique Copper	Brushed Chrome	Gold
Gun Metal	Hammered Leather	Natural Iron	Swedish Nickel	Vintage Iron
Black Onyx				

# Interior lining options

Classic brick? Contemporary copper? You pick the perfect backdrop for the beautiful Mendota flames.

Panoramic Black Porcelain Reflective	Panoramic Copper Porcelain Reflective	Panoramic Metallic Mocha Porcelain Reflective	Panoramic Metallic Silver Porcelain Reflective	Black Porcelain Reflective
Black Flat Panel	Concrete Flat Panel	Desert Flat Panel	Espresso Flat Panel	
Red Soldier Course Brick	Antique Red Firebrick			

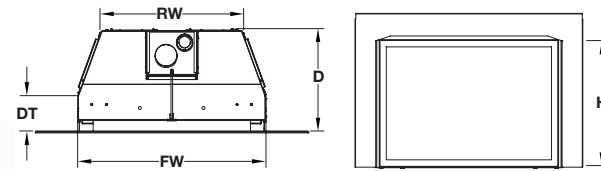
NOTE: Lining and finish options vary based on fireplace insert model. See [www.mendotahearth.com](http://www.mendotahearth.com) for complete details.



# Mendota gas fireplace insert specifications

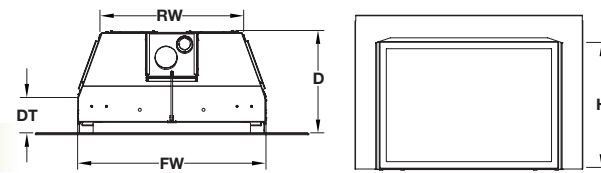
For more detailed specs or installation information, check the owner's manual or talk with your

Authorized Mendota Dealer.



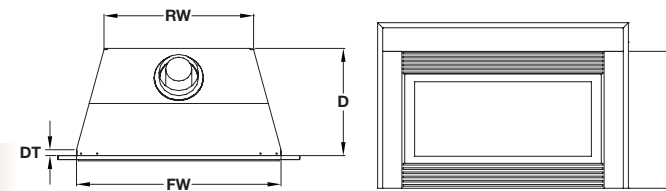
## FullView Décor

	Natural Gas (BTUH)	LP Gas (BTUH)	CSA P.4 Efficiency	Minimum Fireplace Opening Requirements				
				Front Width	Rear Width	Depth	Depth To Taper	Height
FV33i Décor	13,500-25,000	20,800-25,000	77.1%	29 5/8"	23 1/4"	Varies*	6"	19"
FV44i Décor	20,000-29,000	23,000-29,000	77.9%	33 1/8"	25 1/4"	Varies*	6 1/4"	24 1/4"



## FullView

	Natural Gas (BTUH)	LP Gas (BTUH)	CSA P.4 Efficiency	Minimum Fireplace Opening Requirements				
				Front Width	Rear Width	Depth	Depth To Taper	Height
FV33i	13,000-31,000	13,000-31,000	76.0%	29 5/8"	23 1/4"	Varies*	6"	19"
FV44i	16,300-40,000	15,300-40,000	82.0%	33 1/8"	25 1/4"	Varies*	6 1/4"	24 1/4"



## D Series

	Natural Gas (BTUH)	LP Gas (BTUH)	CSA P.4 Efficiency	Minimum Fireplace Opening Requirements				
				Front Width	Rear Width	Depth	Depth To Taper	Height
D30	19,900-30,000	16,200-29,000	73.1%	30 1/2"	22 1/4"	16"	1"	19 1/2"
D40	26,400-40,000	25,740-39,000	75.9%	34 1/8"	24"	16 3/8"	3"	22 7/8"

KEY: FW=Front Width, RW=Rear Width, H=Height, D=Depth, DT=Depth To Taper

### \*Minimum Fireplace Depth Requirement (Depends on Outer Edge Return Depth)

	Outer Edge Depth	Minimum Fireplace Depth Required
FV33i Décor FV33i	FLAT	17 5/8"
	1/2"	17 3/8"
	1 3/4"	16 1/8"
FV44i Décor FV44i	FLAT	17 3/4"
	1/2"	17 1/2"
	1 3/4"	16 1/4"
D30	3/4"	16"
D40	3/4"	16 3/8"

All efficiency ratings are based on the CSA P.4 test method for natural gas. Products, specifications and prices are subject to change without notice.

Rectangle Surround Sizes			
	Size	Width (in.)	Height (in.)
FV33i Décor & FV33i	Small	36"	24"
	Medium	40"	27"
	Large	44"	31"
FV33i Décor & FV33i with Grace Frame	1" reveal	35"	21 1/8"
	1 1/2" reveal	36"	21 5/8"
FV44i Décor & FV44i	X-Small	40"	29"
	Small	44"	31"
	Medium	48"	33"
FV44i Décor & FV44i with Grace Frame	1" reveal	39 3/8"	26 3/8"
	1 1/2" reveal	40 3/8"	26 7/8"
D30	Small	36"	24"
	Medium	40"	27"
	Large	44"	31"
D40	Small	44"	31"
	Medium	48"	33"
	Large	52"	36"

Arch Surround Sizes			
	Width (in.)	Height (in.)	Arch Starts At
FV33i with Andover Doors	28 7/8"	40 1/4"	24 7/8"
FV33i with Bentley Doors	28 7/8"	40 1/4"	22 7/8"
FV33i with Grace Frame (1" reveal)	24 15/16"	35"	19 13/16"
FV33i with Grace Frame (1 1/2" reveal)	25 7/16"	36"	20 1/8"
FV44i with Andover Doors	33 3/8"	44"	27 3/8"
FV44i with Bentley Doors	33 3/8"	44"	27 3/8"
FV44i with Grace Frame (1" reveal)	30 1/4"	39 3/8"	25 1/8"
FV44i with Grace Frame (1 1/2" reveal)	30 7/8"	40 3/8"	25 1/2"

## Mendota gas fireplace insert sizing diagram

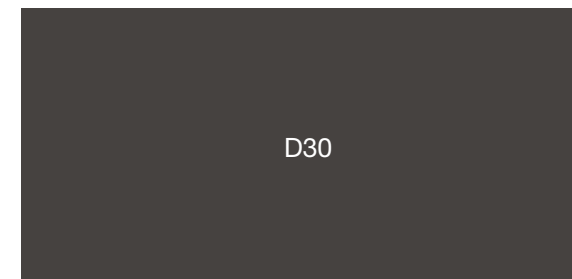
When it comes to finding the right gas fireplace insert for your home, aesthetics and heat output are equally important considerations. This chart provides a quick reference for relative scale, but your Authorized Mendota Dealer will help you choose the perfect size based on your climate, floor plan and lifestyle.



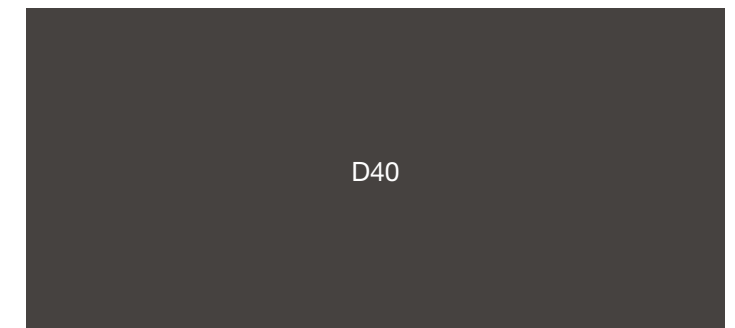
Glass Frame Dimensions: 27 7/8" W x 17 3/8" H



Glass Frame Dimensions: 31 1/2" W x 22 3/8" H



Glass Frame Dimensions: 29 7/16" W x 14 1/8" H



Glass Frame Dimensions: 35 13/16" W x 16 5/8" H





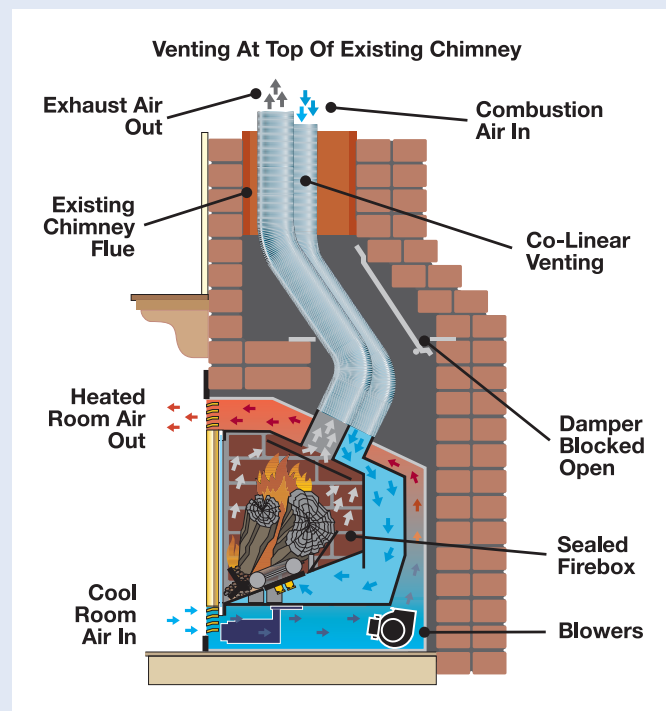
## Mendota sealed combustion, direct vent technology

Mendota's sealed combustion, direct vent system draws air for combustion from outside the home into a sealed firebox. Exhaust is expelled through a separate vent. Room air is heated and recirculated. The system keeps warm air in and cold air out. This assures high air quality, maximum efficiency and trouble-free operation in today's tight homes.

**Adding a Mendota fireplace insert can also warm up the value of your home.** In addition to the efficiency you'll enjoy from installing a fireplace insert in your home, you can also increase its overall value.

According to a 2013 National Association of Realtors® homebuyer survey, fireplaces are among the most-preferred features in a home. Almost 40% of those surveyed said they would actually pay extra for a house with at least one fireplace. What's more, a 2012 National Association of Home Builders (NAHB) survey showed that more than half of homebuyers said a fireplace was an essential or desirable feature.

And with a wide variety of sizes and styles available, there's a Mendota fireplace insert that's perfect for increasing your home's value.



## With Mendota, beauty and safety go hand-in-hand

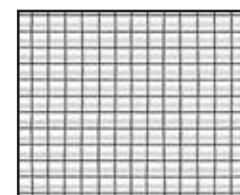
### Pair education with our factory-provided screens to enjoy your Mendota, safely

Nothing brings families together like a Mendota fireplace in a favorite gathering spot. That's why we make fireplace safety a top priority. Together, we can make sure you and your loved ones enjoy every moment around the hearth without worry.

First, take a moment to educate children about the dangers of fire, and teach them to never touch the hot glass or metal surfaces surrounding the fireplace.

To further promote safe use, all Mendota products are in compliance with government safety screen regulations. Each safety screen has been carefully engineered to keep little hands away from hot glass surfaces while still allowing you to fully enjoy the view of the beautiful Mendota flames.

Keep in mind that while the screens provide an effective safety barrier from the glass, the screens themselves can retain heat for some time after turning off the fire. Be sure to let your fireplace insert cool completely before attempting to touch it.



Select fronts, including Grace and Willowbrook, feature our new micro safety screen that virtually disappears once installed over the fireplace insert.



## BurnGreen™ comfort control, with just a simple touch



Mendota's environmentally friendly, sealed combustion, direct vent fireplaces with the BurnGreen™ system are designed to meet exacting governmental EPA standards, as well as national LEED® and NAHB guidelines for high efficiency and low emissions. BurnGreen™ means burning smarter, giving you choices to conserve fuel and help the environment. It allows you to easily:

- Turn the pilot and burners on and off
- Adjust the heat output to your comfort
- Turn the blowers on and off or adjust blower air output
- Turn the FireLight on and off

You can accurately control room temperature using the remote control's smart digital thermostat. Simply set the temperature, and the burner will automatically turn down as room temperature nears the set temperature, eliminating "spikes."

NOTE: Remotes vary by model. Ask your Authorized Mendota Dealer which remote is included with your Mendota fireplace insert.

Save energy by "zone heating" with a Mendota gas fireplace insert

### Heat the room you use the most

With an energy efficient Mendota gas fireplace insert in the room you use the most, you can turn down the central heat, enjoy the beauty, warmth and fascination of Mendota's award-winning log fire, and save valuable dollars on your energy bill.

FireLight accents your hearth, with or without flames

### Included with select models

Use our FireLight accent lighting system when the fire is on to add extra drama and detailing to the interior lining and fire base. Or enjoy the ambiance and gentle glow without flames or heat during warmer months.

## See why Mendota fireplace inserts are among the most efficient in the industry



### Get the lowdown on high efficiency to make the smart choice

Much like comparing miles per gallon when buying a new vehicle, fireplace efficiency ratings tell you a lot about how much gas a particular fireplace will consume as you use it. But beware—not all fireplace manufacturers use the same rating system.

The best way to determine the efficiency of a gas fireplace insert is to ask for its rating based on the CSA P.4 test method. This accurate measurement reflects the overall operation of the fireplace insert, taking into account its use and performance throughout the entire heating season. Tests using this Canadian standard for measuring annual fireplace efficiency show that while some units operate in the 30% range, the better units range from 70-90%.

With P.4 fireplace efficiency ratings ranging from 73.1% to 82.0%, Mendota fireplace inserts are among the industry's most efficient and represent a smart choice for your home. Download all independent fireplace ratings from the Canadian P.4 EnerGuide website at [www.oee.nrcan.gc.ca](http://www.oee.nrcan.gc.ca) (search for Mendota).





Model FV33i with Black Basix front, Premium Fiber Oak Log fire base and Red Soldier Course Brick interior lining

# Your home deserves a Mendota

Whether you're updating a room or completing a major remodel, it's important to choose a gas fireplace insert that complements your home and your style. Why?

- A fireplace insert is a once-in-a-lifetime purchase that's permanently installed in your home. It's not something that you replace every so often like a car or television.
- A fireplace insert is the center of attention in the most important room in your home—something you'll see and enjoy every day.
- A fireplace insert is a product from which you expect a high degree of performance and safety.

## MENDOTA

NORTH AMERICA'S LUXURY FIREPLACE

JOHNSON GAS APPLIANCE CO.  
Gas Specialists Since 1901  
520 E Avenue NW  
Cedar Rapids, IA 52405

MENDOTA HEARTH DIVISION  
High Performance Fireplaces  
520 E Avenue NW  
Cedar Rapids, IA 52405

[www.mendotahearth.com](http://www.mendotahearth.com) • [info@mendotahearth.com](mailto:info@mendotahearth.com)



Over a century of gas expertise



[facebook.com/mendotahearth](https://facebook.com/mendotahearth)

Your Exclusive Mendota Dealer:



Scan the code to design your perfect Mendota insert