



WARNINGS

- Make sure the gas control valve is OFF and the heater is cool prior to conducting service.
- Failure to position the parts in accordance with these diagrams or failure to use only parts specifically approved with this appliance may result in property damage or personal injury.
- If using propane (LP), convert the appliance before installing the logs (see the owners manual for details).

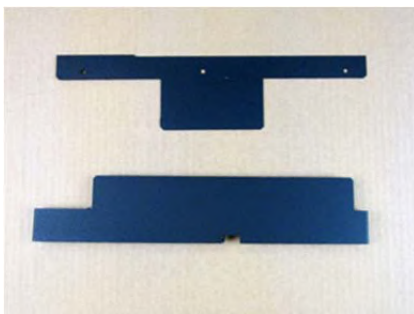
Compatibility

616 GSR

Packing List



10-Piece Traditional Log Set



Rear Air Deflector, Rear Log Support.
NG and LP compatible.

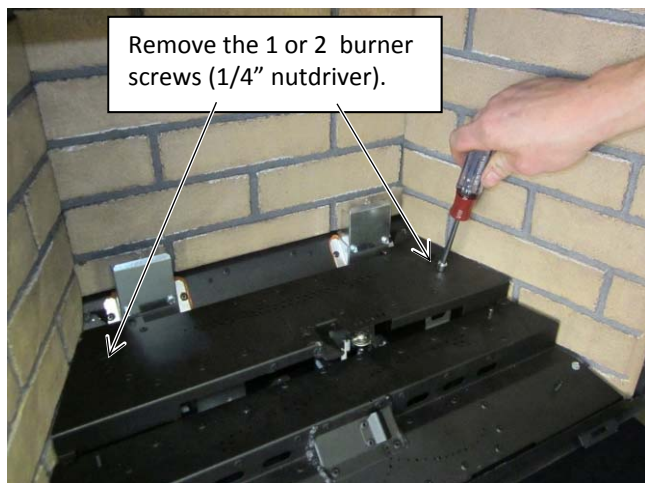


Bag of Rock Wool, Bag of Embers

Burner Installation

NOTE: The insert should be in place, with the gas line and vent attached and the firebacks installed (see owner's manual for further details).

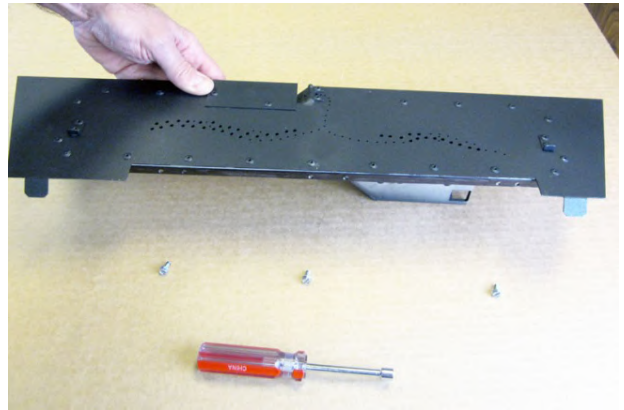
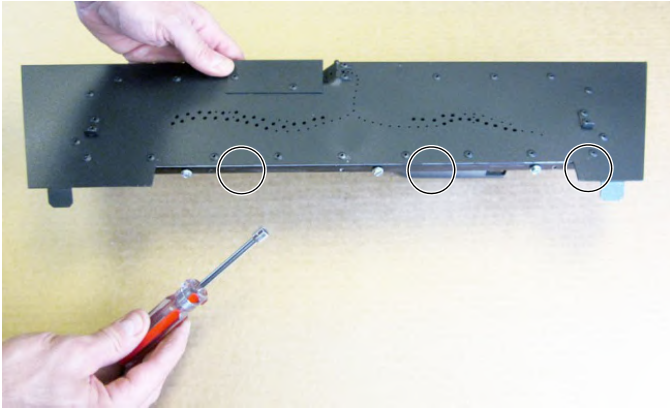
1. Remove the rear burner.



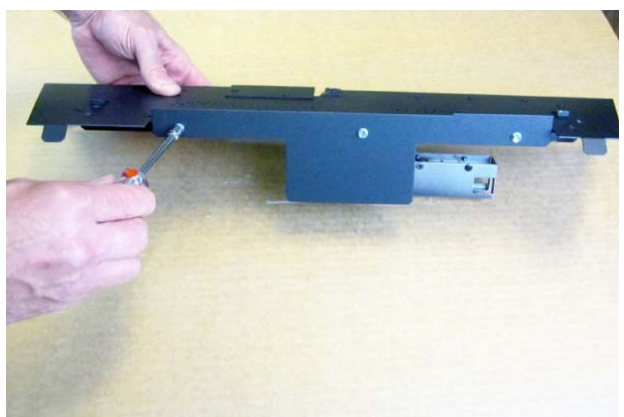
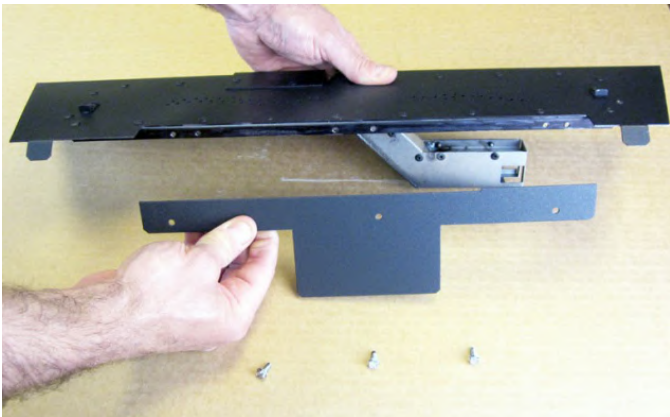
616 GSR Traditional Log Set Version 2

Installation Instructions (SKU 94500947)

2. Remove the 3 screws from the back of the rear burner using a 1/4" nutdriver.



3. Attach the rear air deflector to the rear burner with the screws removed in the previous step.



4. Replace the rear burner and secure with the attachment screw(s).



5. Install the rear log shelf.

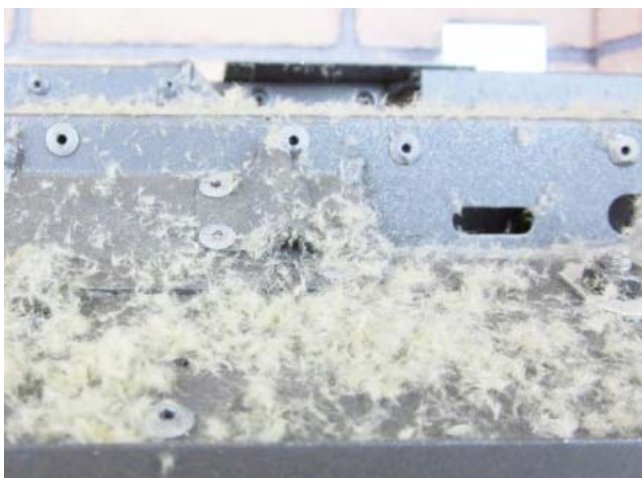


Rock Wool Placement

6. Place the rock wool as shown below. Use a stiff brush to apply the rock wool in a loose, gauze-like layer.



TIP: Hold the rock wool in a tight wad with one hand while brushing with the other.



Note how the rock wool is approximately 1/8" thick over the burner ports.

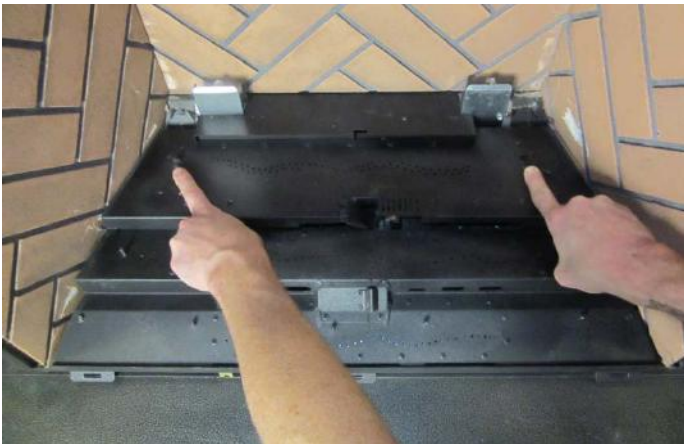
TIP: Feel free to apply a generous amount of rock wool to gain a darker flame and a brighter coal bed.

Log and Ember Chunks Placement



The logs are fragile, especially after being exposed to heat.

- The burner must be correctly positioned before installing the logs. Make sure the burner is fully seated.
7. Place the rear log as shown below.



Pull the log forward until it rests against the tabs on the burners.

616 GSR Traditional Log Set Version 2

Installation Instructions (SKU 94500947)

8. Place the right middle log as shown below. The right middle log needs to be pushed back tight against the rear burner.



9. Place the left middle log as shown below. The left middle log needs to be pushed back tight against the rear burner.



616 GSR Traditional Log Set Version 2

Installation Instructions (SKU 94500947)

10. Place the right front log as shown.



11. Place the left front log as shown.



616 GSR Traditional Log Set Version 2 Installation Instructions (SKU 94500947)

12. Place ember chunks in the gaps between left and right middle logs



13. Place the right cross log as shown below.



616 GSR Traditional Log Set Version 2

Installation Instructions (SKU 94500947)

14. Place the middle cross log as shown below.



15. Place the left cross log as shown below.



616 GSR Traditional Log Set Version 2 Installation Instructions (SKU 94500947)

16. Place front ember log as shown below.



17. Place the twig chunk as shown below.



616 GSR Traditional Log Set Version 2

Installation Instructions (SKU 94500947)

18. Place the ember chunks in the front corners and along the front of the burner. Use the ember chunks to cover screw heads but do not place them over porting.



19. Re-apply the rock wool over the ember chunks along the front burner and between the two front logs for a natural look.

TIP: Applying rock wool in the cracks of the logs helps to add small points of glow, but may dampen the overall glow of the logs.

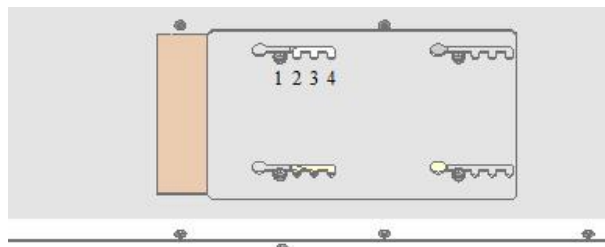
TIP: Natural gas (NG) can use more rock wool than propane (LP).

NOTE: Initial application of rock wool may cause “matting” over burner ports. Turning the unit on and then off again will loosen the rock wool, resulting in a better flame.

20. The insert should be test-burned with the glass frame in place prior to leaving the installation. See the owner’s manual for details on finalizing the installation (adjusting the air shutter, etc.).

21. Check the exhaust restrictor setting before finalizing the installation.

	Restrictor Settings Traditional Logs
Natural Gas Short Vent (25’ or less)	#3 (stock)
Natural Gas Tall Vent (25’ or more)	#3 (stock)
Propane Short Vent (25’ or less)	#1
Propane Tall Vent (25’ or more)	#3 (stock)



Exhaust Restrictor

Position #1 - Open
Position #4 - Closed